

Y-Strainer 316 Stainless steel Screwed BSP.

ISO 9002



Size 1/2", 3/4", 1", 1-1/4", 1-1/2", 2"
Screwed Connection BSP.

Maximum Pressure 12 bar

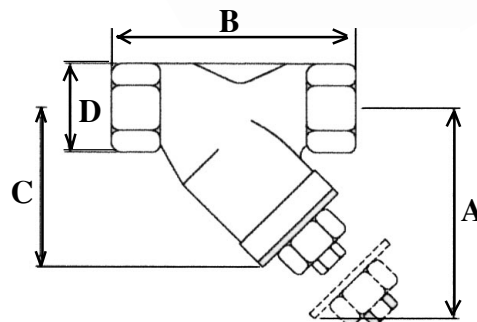
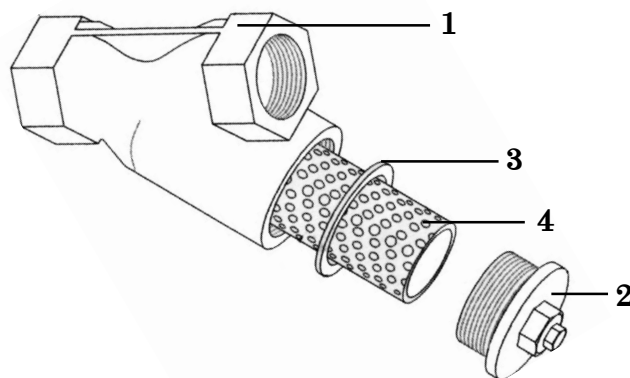
Maximum Temperature 200 °C

Dimensions (in millimetres)

Size	A	B	C	D	Weight(kg)
1/2"	87	66	42	26	0.29
3/4"	110	80	51	32	0.38
1"	125	87	65.5	41	0.70
1-1/4"	155	104	71.5	49	0.87
1-1/2"	190	117	80	56	1.20
2"	230	138	95.5	69	1.90

Materials

1 Body	Stainless steel	316
2 Cap	Stainless steel	316
3 Cap gasket	Reinforced graphite	
4 Strainer screen 60,80,100 mesh	Stainless steel	316



Installation of strainers

Horizontal lines. Strainers used on steam and gases should be installed with the pocket in the horizontal plane. On liquid systems the pocket should point vertically downwards.



Strainer installed on steam or gas line.



Strainer installed on liquid line.

Vertical Lines. It is advisable to install strainers in horizontal lines. Where this is not possible strainers can be installed where flow is vertically downwards.

