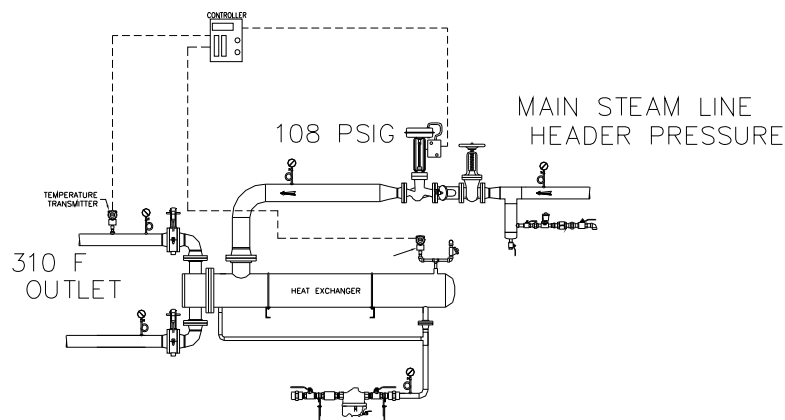


**Example:**

Process temperature requirements are 310°F; using the steam tables locate the corresponding steam pressure.

1. 310°F = 63 psig
2. Add 45 psig to 63 psig; = 108 psig
3. 108 psig is provided to the manufacturer for the delivered steam pressure



**Conclusion**

Always select the correct steam pressure for each application which will result in optimum performance of the process equipment while ensuring system reliability.