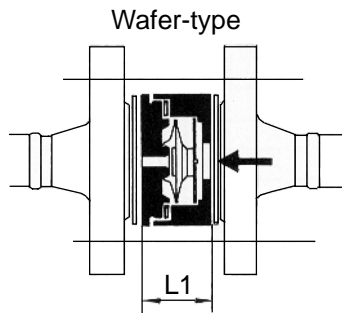




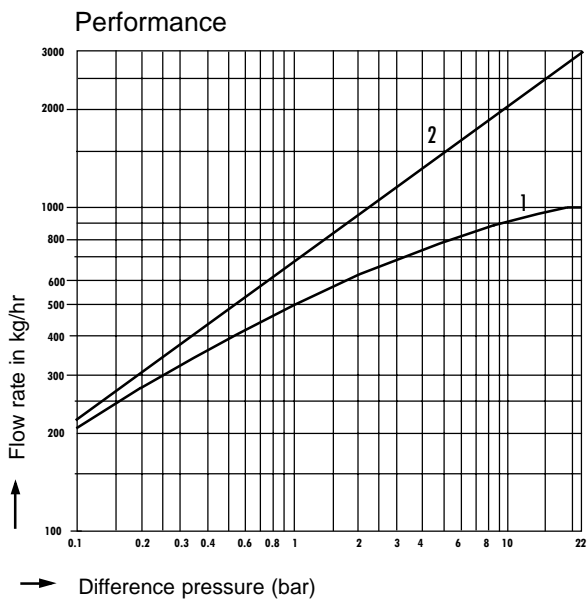
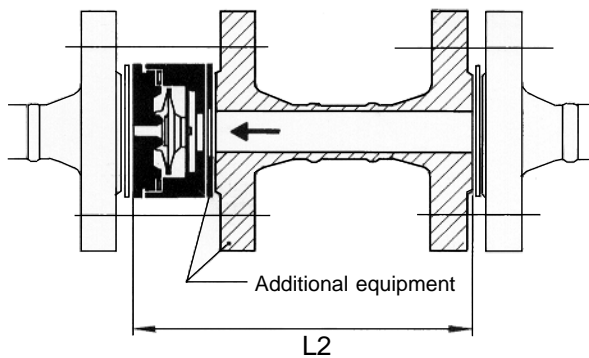
RIFOX

RIFOKa Thermo Controlled Capsule Steam Trap Type Z 10250, PN 16/25/40

**RIFOKa Thermo Controlled Capsule -
Steam trap, Type Z-10250**



Face to face dimension acc. DIN 3548 and DIN 3202



The diagram shows the flow rates of cold condensate (2) and hot condensate (1) when using a standard capsule type S with approx. 6 K condensate undercooling.

Connections :

For flange , DN 15, 20, 25, PN 16 and 40

Face to face dimensions :

- water-type accordance DIN 3202, K5 (fig.1)
- accordance DIN 3202, F1 (fig.2)
- accordance DIN 3548, LK (fig.2)
- special length on request

Installation : Horizontal or vertical

Nominal pressure stage : PN 40

Operation limits : 28 barg / 300 °C

Media : Steam condensate

Function :

A special liquid contained within the capsule evaporates or condenses due to changes in temperature. The operating temperature is only a few degrees below the boiling point of water. When the temperature rises, the liquid evaporates and the valve closes ; when the temperature drops, the liquid condenses and the valve opens.

Special characteristics :

Wafer-type design for DIN and Speciallength. Due to the very slight temperature drop, accumulation of the condensate is reduced. The capsule reacts to temperature changes immediately. This system ensures prevention of losses in live and control steam and is insensitive to water hammer and back pressure.

Additional equipment :

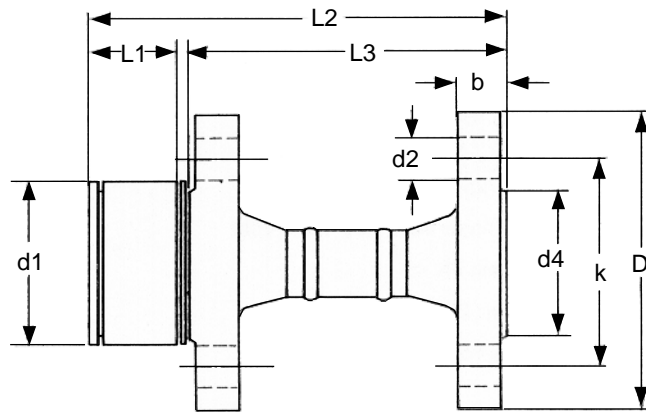
- Capsule type H for appr. 5 °C undercooling (free of charge)
- Capsule type L for appr. 30 °C undercooling (free of charge)
- Double flanged taper with gasket

When placing orders, please specify :

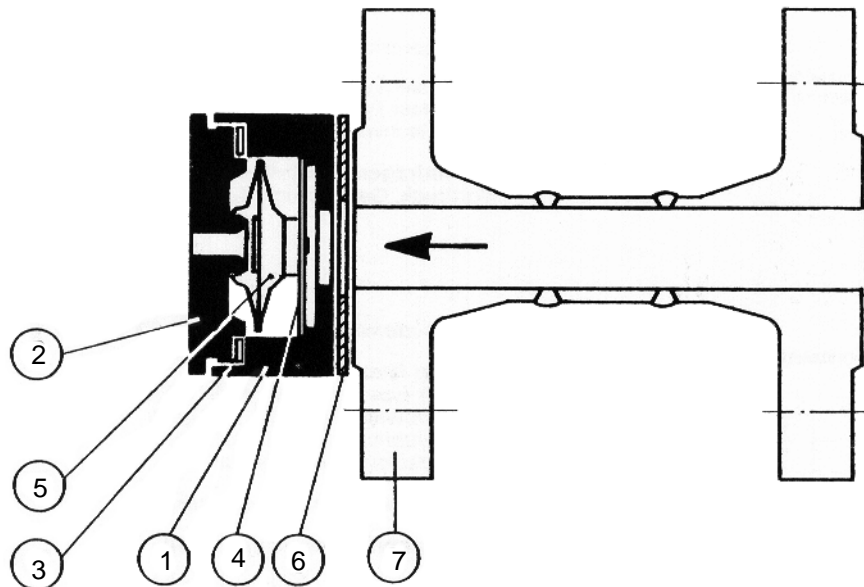
High or low cooling range of condensate , actual operating pressure, operating temperature, quantity of condensate.

Dimensions (in mm), Weight (in kg)

Connection	Flange						
	DN 15			DN 20		DN 25	
L1 (DIN 3202, K5)	25	25	25	31,5	31,5	35	35
L2 (DIN 3202, F1)	-	130	-	-	-	-	-
L2 (DIN 3548, LK)	-	-	150	-	150	-	160
L3	-	103	123	-	117	-	123
d1	50	50	50	60	60	70	70
D	-	95	95	-	105	-	115
d4	-	45	45	-	58	-	68
d2	-	14	14	-	14	-	14
k	-	65	65	-	75	-	85
b	-	16	16	-	18	-	18
Weight	0.3	1.8	1.8	0.4	2.4	0.5	3.0



Spare Parts For Type Z 10250 with material data



- 1 Housing cap : SS 1.4104 , DIN 17440
- 2 Cover : SS 1.4104 , DIN 17440
- 3 Gasket : Soft iron, ridge profiled
- 4 Strainer : SS 1.4301 , DIN 17440
- 5 Capsule : Hastelloy / SS
- 6 Gasket : Poor graphite with SS
- 7 Flanged taper : C22.8 , DIN 17243