

2-Way full-bore Flat body flanged Stainless steel Ball Valve, Split wafer

ART. 412



Standard executions:

Standard features of the valve: anti blow-out shaft, antistatic device, easy replacement of the seal packages, fire safe and self-adjusting shaft sealing.

Flanges as per: UNI 2223 and 2229 PN 16

General specifications: BS 5351 "FIRE SAFE" conforming to BS 6755

Working temperature: from -20°C to +150°C (+200°C with special seals).

Working pressure: PN 16.

Fluid range: air, water, gas, petroleum and petrochemical products, aggressive media.

Approvals:

According to 97/23 EC "PED"

On request:

PN 25; PN 40.

Seals made of:

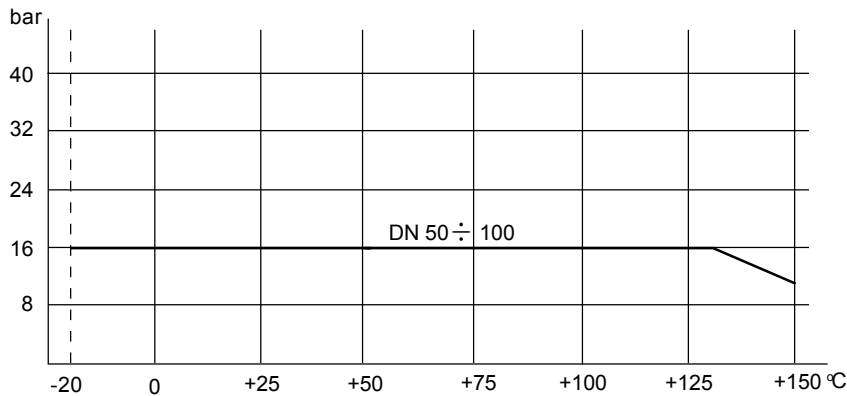
PTFE with glass

PTFE with carbon graphite

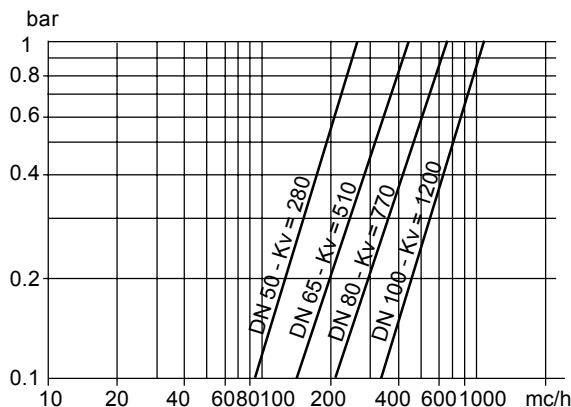
For other applications, please contact our technical department.

VALVE CODES IN STANDARD EXECUTION

size	DN 50	DN 65	DN 80	DN 100
Free shaft	V412X609	V412X610	V412X611	V412X612
weight Kg.	10.5	17	16.8	21.8
with lever	L412X609	L412X610	L412X611	L412X612
weight Kg.	11	17.5	17.3	22.8



Pressure / Temperature diagram



flow-pressure loss diagram and Kv nominal coefficient.

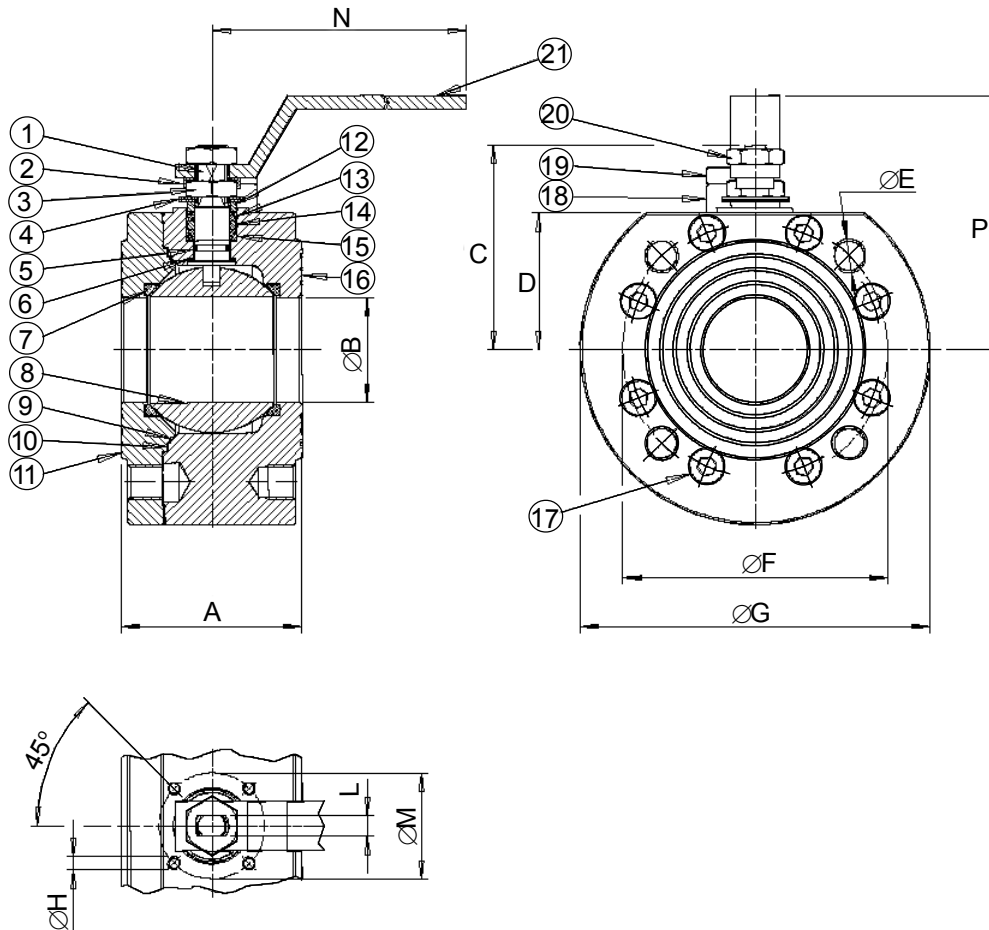
Kv is the coefficient, expressed in m³/h (with water at 15°C) causing a pressure loss of 1 bar.

BREAK AWAY TORQUES in Nm

size	DN 50	DN 65	DN 80	DN 100		
PN 0 bar						
PN 16 bar	44	67	92	180		
PN 25 bar						
PN 40 bar						

Torque can vary depending on temperature and type of fluid; a safety factor of 1.4 must be applied. Torque can drop on high frequency of operations.

VALVE TYPE 412



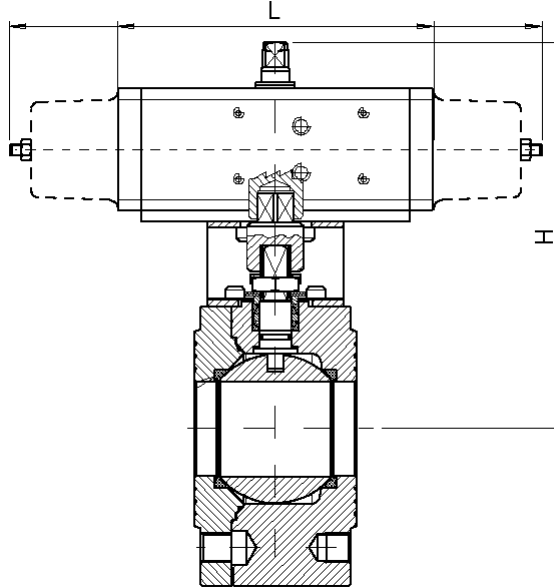
MATERIALS

1) Shaft	AISI 316	1.4401	UNI X5CrNiMo 17 12
2) Lock nut plate	AISI 304	1.4301	UNI X5CrNi 18 10
3) Nut	AISI 304	1.4301	UNI X5CrNi 18 10
4) Spring	AISI 301	1.4310	UNI X12CrNi 17 07
5) Shaft o-ring	FKM		
6) Bottom sealing	P.T.F.E.		
7) Seals	P.T.F.E.		
8) Ball	AISI 316	1.4401	UNI X5CrNiMo 17 12
9) Tight ring	P.T.F.E.		
10) External tight ring	Grafite		
11) Ring nut	AISI 316	1.4401	UNI X5CrNiMo 17 12
12) Washer	AISI 304	1.4301	UNI X5CrNi 18 10
13) Top sealing	P.T.F.E.		
14) Top ring	AISI 304	1.4301	UNI X5CrNi 18 10
15) Seals	P.T.F.E.		
16) Body	AISI 316	1.4401	UNI X5CrNiMo 17 12
17) Ring nut screws	AISI 304	1.4301	UNI X5CrNi 18 10
18) Holder	AISI 304	1.4301	UNI X5CrNi 18 10
19) Holder screw	AISI 304	1.4301	UNI X5CrNi 18 10
20) Lever nut	AISI 304	1.4301	UNI X5CrNi 18 10
21) Lever	AISI 304	1.4301	UNI X5CrNi 18 10

DIMENSIONS

Size	A	øB	C	D	øE	øF	øG	øH	L	øM	n° holes	N	P
DN50	85	49.5	94.5	64.5	M16	125	165	M6	10	50	4	230	177
DN65	103	65	119.5	80	M16	145	185	M8	14	70	4	320	139
DN80	122	78	129.5	90	M16	160	200	M8	14	70	8	320	149
DN100	155	96	148.5	101	M16	180	220	M10	16	102	8	370	167

AUTOMATED VALVE TYPE 412



DOUBLE ACTING PNEUMATIC ACTUATOR

Model	Actuator	Mounting kit	DN mm	L mm	H mm	Weight Kg
D412H069	DA090401S	KCF051322	50	169	202.5	12.8
D412H070	DA120401S	KCF051325	65	184	245	20.4
D412A071	DA180401S	KCF071326	80	212	265	26
D412A072	DA360401S	KCF101092	100	264	333	42



SPRING RETURN PNEUMATIC ACTUATOR

Model	Actuator	Mounting kit	DN mm	L mm	H mm	Weight Kg
S412A069	SR090401S	KCF071323	50	357	240.5	15.2
S412H070	SR120401S	KCF071326	65	372	265	24
S412A071	SR180401S	KCF101280	80	436	297	32.2
S412A072	SR360401S	KCF121065	100	566	363	51

