

## 2-Way full-bore Flat body Flanged Carbon steel Ball Valve

ART. 515 PN 16



**Standard executions:**

Flanges as per UNI 2223 and 2229 PN 16, DIN 2501 BL.1

Available on request UNI (PN 25-40-64-100) ANSI B16.5 - ANSI B16.10 (150 RF, 300 RF, 600 RF)

General specifications: BS 5351

("FIRE SAFE" conforming to BS 6755 on request)

Working temperature: from -20°C to +150°C

Working pressure: PN 16; PN 25 - PN 40 - PN 64 on request

Fluid range: air, water, gas, petroleum and petrochemical products.

**Approvals:**

According to 97/23 EC "PED"

**On request:**

Heating jackets.

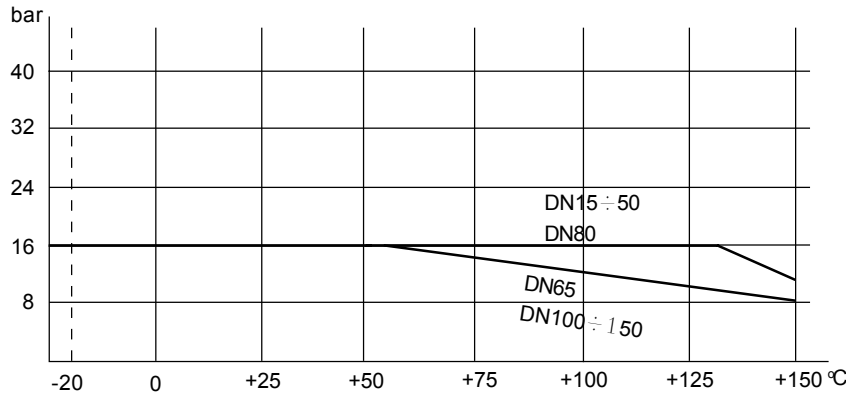
Seals made of: PTFE with glass

PTFE with carbon graphite

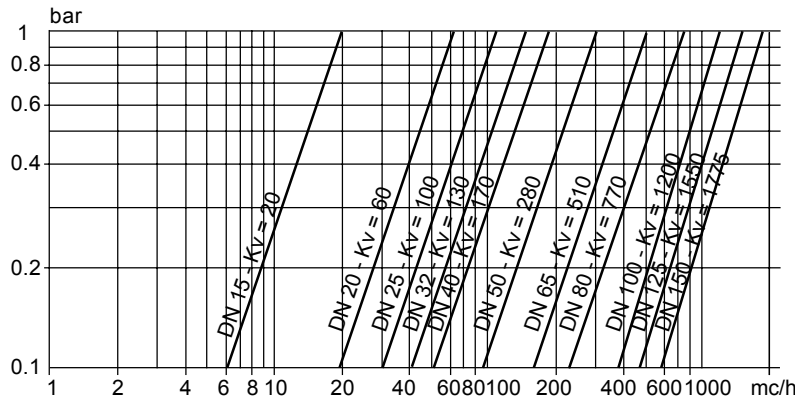
For other applications, please contact our technical department.

**VALVE CODES IN STANDARD EXECUTION**

size	DN 15	DN 20	DN 25	DN 32	DN 40	DN 50	DN 65	DN 80	DN 100	DN 125	DN 150
Free shaft weight Kg.	V515F604	V515F605	V515F606	V515F607	V515F608	V515F609	V515F610	V515F611	V515F612	V515F613	V515F614
with lever weight Kg.	L515F604	L515F605	L515F606	L515F607	L515F608	L515F609	L515F610	L515F611	L515F612	L515F613	L515F614



Pressure / Temperature diagram



**flow-pressure loss diagram and Kv nominal coefficient.**

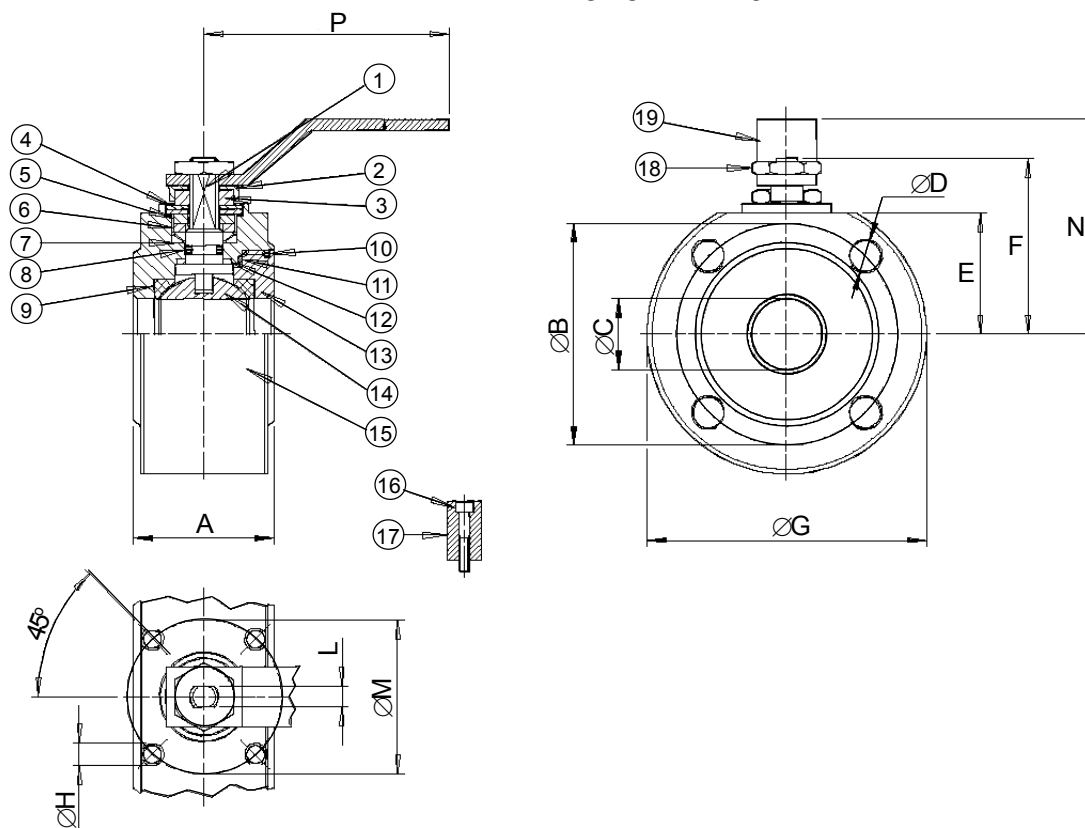
Kv is the coefficient, expressed in m<sup>3</sup>/h (with water at 15°C) causing a pressure loss of 1 bar.

**BREAK AWAY TORQUES in Nm**

size	DN 15	DN 20	DN 25	DN32	DN40	DN50	DN65	DN80	DN100	DN125	DN150
PN 0 bar											
PN 16 bar	6	11	17	28	33	50	70	100	200	275	520
PN 25 bar											
PN 40 bar											

Torque can vary depending on temperature and type of fluid; a safety factor of 1.4 must be applied. Torque can drop on high frequency of operations

## VALVE TYPE 515 PN 16



### MATERIAL

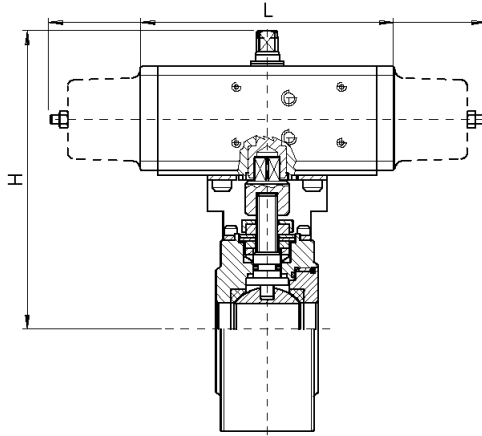
1) Shaft	AISI 316	1.4401	UNI X5CrNiMo 17 12
2) Nut holder	AISI 304	1.4301	UNI X5CrNi 18 10
3) Lock Nut	AISI 304	1.4301	UNI X5CrNi 18 10
4) Spring	50CrV4		
5) Ring	AISI 304	1.4301	UNI X5CrNi 18 10
6) Gland nut ring	AISI 304	1.4301	UNI X5CrNi 18 10
7) Top sealing**	P.T.F.E.		
8) O-ring**	FKM		
9) Seals	P.T.F.E.		
10) O-ring	FKM		
11) Ring nut sealing	P.T.F.E.		
12) Bottom sealing	P.T.F.E.		
13) Ring nut	A 105		
14) Ball DN15 - DN40	AISI 316	1.4401	UNI X5CrNiMo 17 12
14) Ball DN50 - DN150	AISI 304	1.4301	UNI X5CrNi 18 10
15) Body	A 105		
16) Holder screw	AISI 304	1.4301	UNI X5CrNi 18 10
17) Holder	AISI 304	1.4301	UNI X5CrNi 18 10
18) Lever nut	AISI 304	1.4301	UNI X5CrNi 18 10
19) Lever	AISI 304	1.4301	UNI X5CrNi 18 10

\*\* DN 125-150 tight with PTFE loaded seals without o-ring.

### DIMENSIONS

Size	A	øB	øC	øD	E	F	øG	øH	L	øM	n° holes	N	P
DN15	35	65	15	M12	31	48	90	M5	6	36	4	65	140
DN20	38	75	20	M12	34	51	100	M5	6	36	4	70	140
DN25	43	85	25	M12	39.5	62.5	110	M5	8	42	4	82	180
DN32	50	100	32	M16	46	67	130	M5	8	42	4	85	180
DN40	60	110	40	M16	50	80	140	M6	10	50	4	102	230
DN50	70	125	50	M16	57	87	150	M6	10	50	4	110	230
DN65	95	145	65	M16	80	119.5	175	M8	14	70	4	137	350
DN80	118	160	78	M16	90	129.5	190	M8	14	70	8	150	350
DN100	140	180	96	M16	101	148.5	220	M10	16	102	8	165	508
DN125	170	210	118	M16	-	-	255	M10	16	102	8	240	400
DN150	210	240	144	M20	-	-	295	M12	26	125	8	270	500

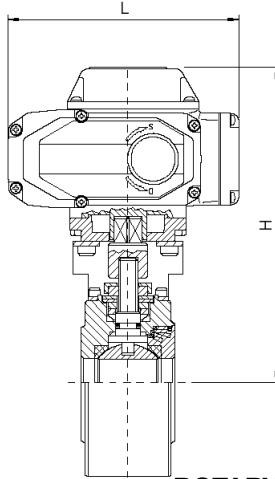
## AUTOMATED VALVE TYPE 515 PN 16



### DOUBLE ACTING PNEUMATIC ACTUATOR

### SPRING RETURN PNEUMATIC ACTUATOR

Model	Actuator	Mounting kit	DN mm	L mm	H mm	Weight Kg	Model	Actuator	Mounting kit	DN mm	L mm	H mm	Weight Kg
D515K064	DA015401S	KCF031315	15	114	143	2.3	S515K064	SR015401S	KCF031315	15	221	151	2.8
D515H065	DA030401S	KCF031315	20	130	154	3	S515H065	SR030402S	KCF042353	20	240	164	4
D515H066	DA030401S	KCF031317	25	130	159.5	3.7	S515H066	SR030402S	KCF042354	25	240	169.5	4.6
D515A067	DA045402S	KCF042354	32	144	172	5.4	S515A067	SR045401S	KCF051909	32	294	184	6.7
D515H068	DA060402S	KCF042355	40	152	180	7.1	S515H068	SR060401S	KCF051322	40	320	206	9.1
D515A069	DA090401S	KCF051322	50	169	195	7.4	S515A069	SR090401S	KCF071323	50	357	233	10
D515H070	DA120401S	KCF051325	65	184	245	12.9	S515H070	SR120401S	KCF071326	65	372	265	16.3
D515A071	DA180401S	KCF071326	80	212	265	16.5	S515A071	SR180401S	KCF101280	80	436	297	23.2
D515A072	DA360401S	KCF101092	100	264	329	28	S515A072	SR360401S	KCF121065	100	566	359	37.3
D515H073	DA480401S	KCF101092	125	295	359	59.5	S515H073	SR480401S	KCF121065	125	609	382	70.5
D515H074	DA960401S	KCF122425	150	384	427	95	S515H074	SR960401S	KCF142424	150	767	472	115



### ON-OFF ELECTRICAL ACTUATOR

### ROTARY MODULAR TYPE ELECTRICAL ACTUATOR

Model	Actuator	Mounting kit	DN mm	L mm	H mm	Weight Kg	Model	Actuator	Mounting kit	DN mm	L mm	H mm	Weight Kg
E51516D64	AE160004	KCF051907	15	158.5	190.5	4.3	M51516C64	AM160002	KCF051907	15	158.5	190.5	4.3
E51516D65	AE160004	KCF051907	20	158.5	193.5	4.8	M51516F65	AM160005	KCE282020	20	207.5	237.5	7.3
E51516D66	AE160004	KCF052074	25	158.5	199	5.4	M51516F66	AM160005	KCE281880	25	207.5	243	7.9
E51516D67	AE160004	KCF051909	32	158.5	205.5	6.9	M51516F67	AM160005	KCE282075	32	207.5	249.5	9.3
E51516H68	AE160010	KCE281912	40	207.5	253.5	10.1	M51516L68	AM160020	KCE362076	40	256.5	295	15.4
E51516H69	AE160010	KCE281912	50	207.5	260.5	9.9	M51516L69	AM160020	KCE362022	50	256.5	302	15
E51516H70	AE160010	KCE281921	65	207.5	283.5	14.8	M51516L70	AM160020	KCE361911	65	256.5	325	19.7
E51516L71	AE160020	KCE361911	80	256.5	335	21.5	M51516L71	AM160020	KCE361911	80	256.5	335	29.3
E51516N72	AE160040	KCE362024	100	256.5	346	30	M51516P72	AM160050	KCE562023	100	381	395	44.9
E51516R73	AE160060	KCE562023	125	381	433	71.7	M51516P73	AM160050	KCE562023	125	381	433	74
E51516T74	AE160100	KCE562426	150	381	478	101.5	M51516T74	AM160100	KCE562426	150	381	478	103.8